

Rampion 2 Wind Farm

Category 6: Environmental Statement

Volume 4, Appendix 8.2 Black bream nests

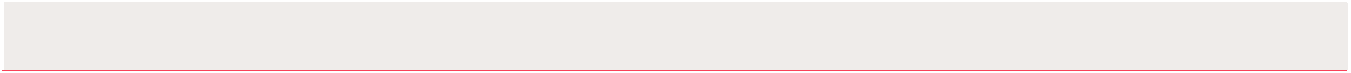
Date: August 2023
Revision A

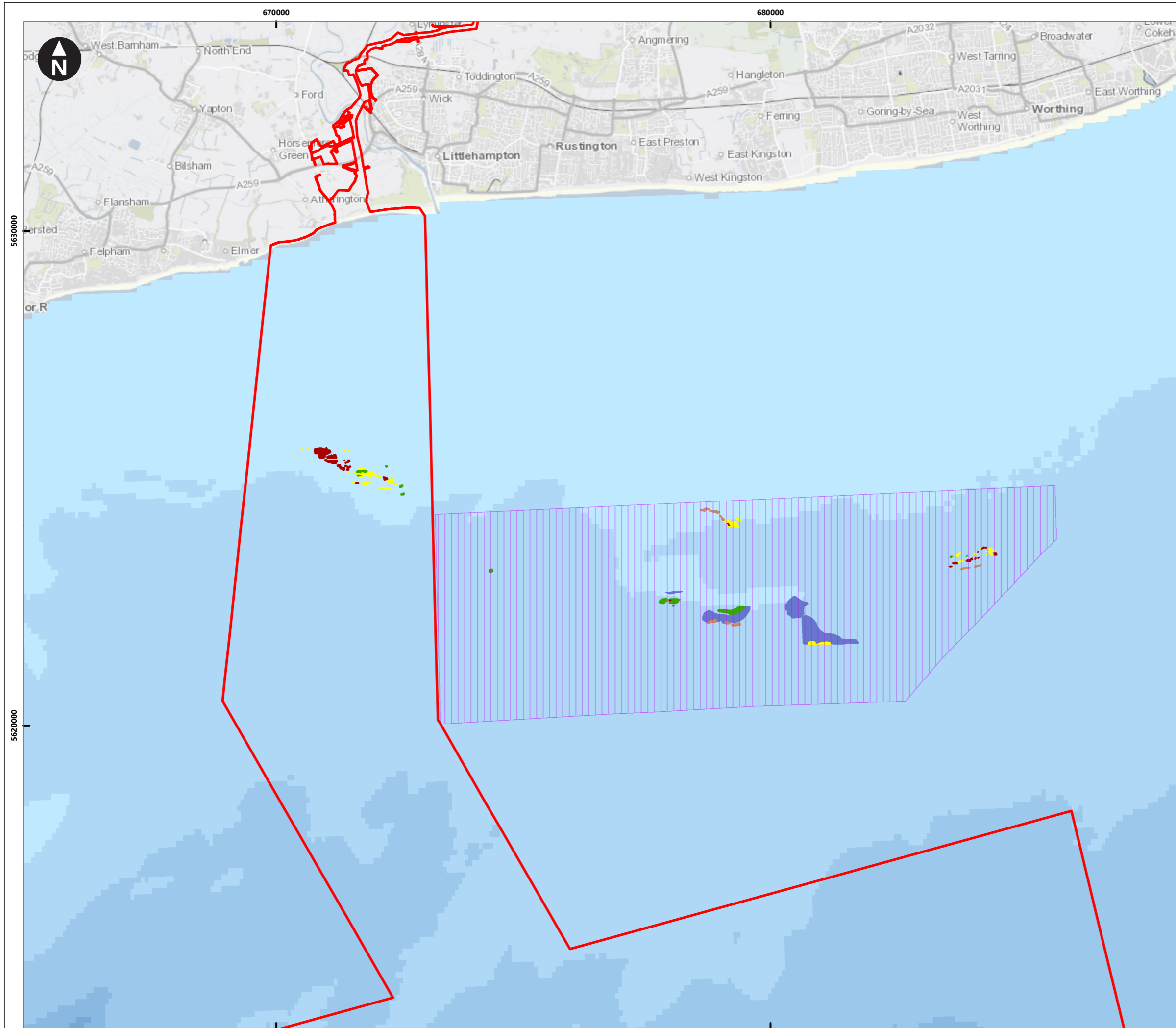
Document Reference: 6.4.8.2
Pursuant to: APFP Regulation 5 (2) (a)
Ecodoc number: 004866469-01



Document revisions

Revision	Date	Status/reason for issue	Author	Checked by	Approved by
A	04/08/2023	Final for DCO Application	GoBe	RED	RED





Contains OS data © Crown Copyright and database right 2020
 Contains Joint Nature Conservation Committee data © copyright and database right 2020; © Tarmac 2002

Key

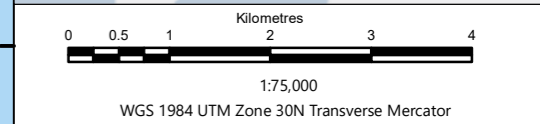
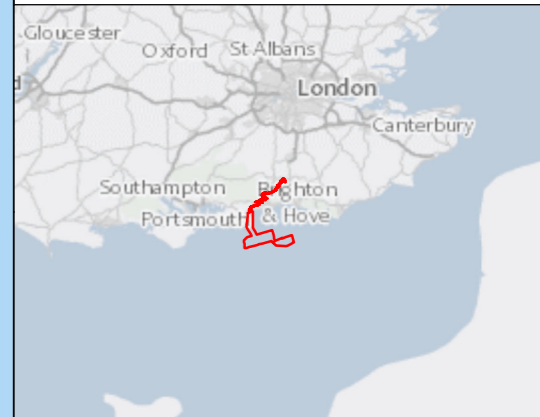
- Proposed DCO Order Limits
- Kingmere Marine Conservation Zone

Black seabream nest density

- Dense nests
- Faint dense nests
- Less dense / patchy nests
- Small patches of nests
- Sparse single nests

Depth (m)

- 0 - 10
- 10 - 20
- 20 - 30
- 30 - 40
- 40 - 50



Rampion Extension Development

Rampion 2 Offshore Wind Farm

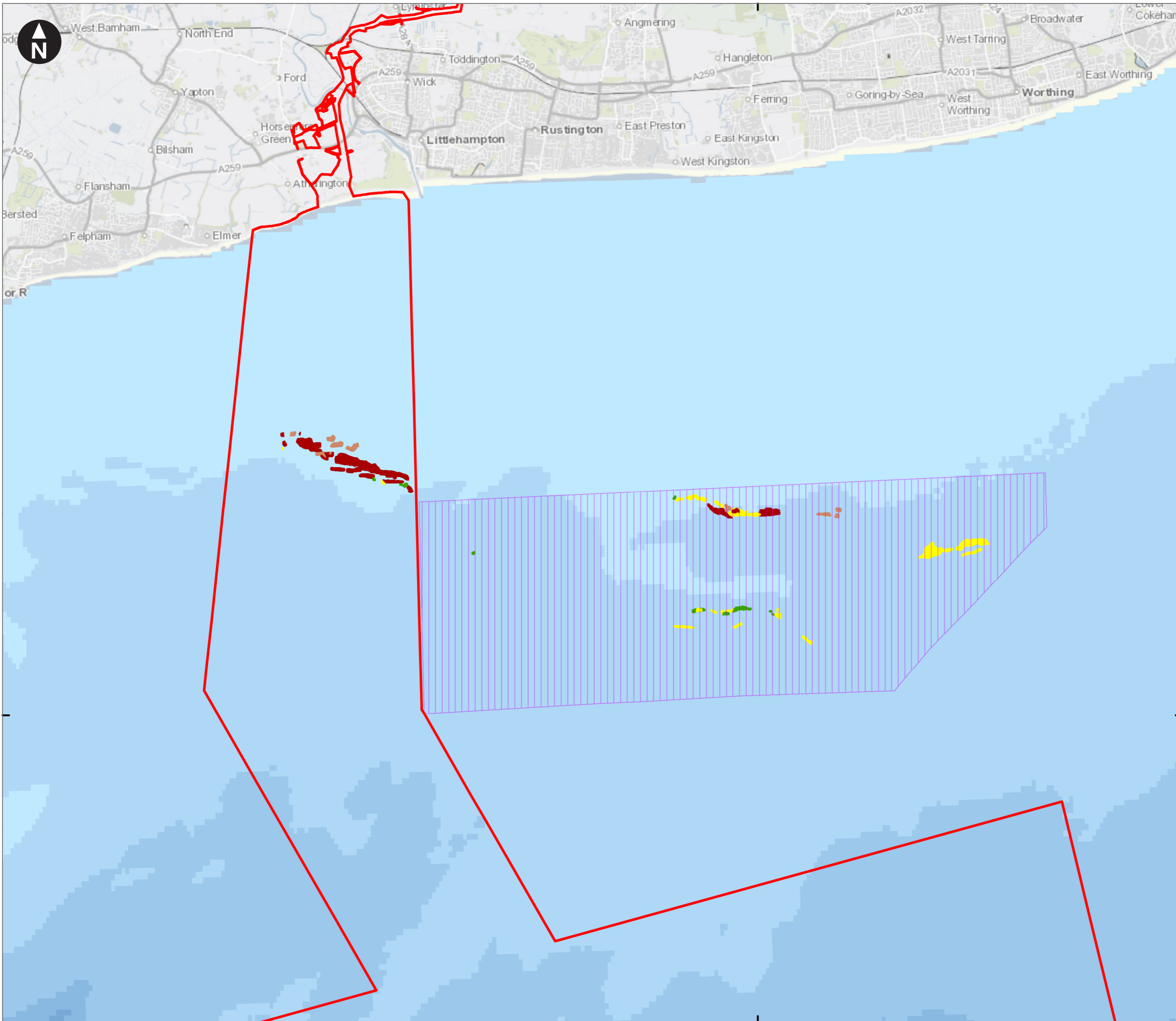
Figure 8.2.1 Locations and densities of black seabream nests 2002

Environmental Statement

System Identifier: 42285-GOBE-PE-OF-FG-07-1846				Version: 1.1
Company: GOBE	Drawn By: BPHB	Chk/Aprvd: NH	Drawn Date: 04/08/2023	Status: FINAL

680000

Contains OS data © Crown Copyright and database right 2020
Contains Joint NatureConservation Committee data © copyright and database right 2020; © Tarmac 2009



Key

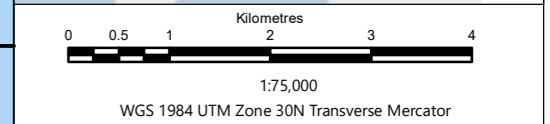
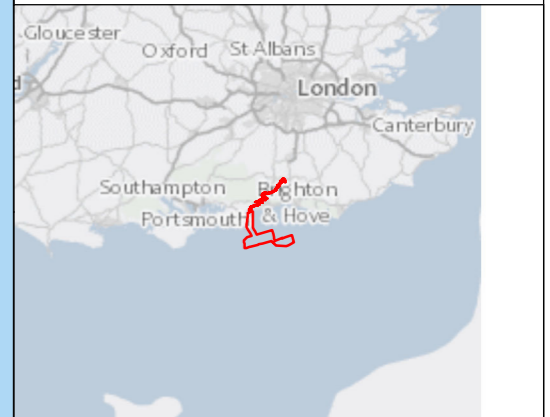
- Proposed DCO Order Limits
- Kingmere Marine Conservation Zone

Black seabream nest density

- Dense Nests
- Faint Dense Nests
- Less Dense/Patchy Nests
- Small Patches Nests

Depth (m)

- 0 - 10
- 10 - 20
- 20 - 30
- 30 - 40
- 40 - 50



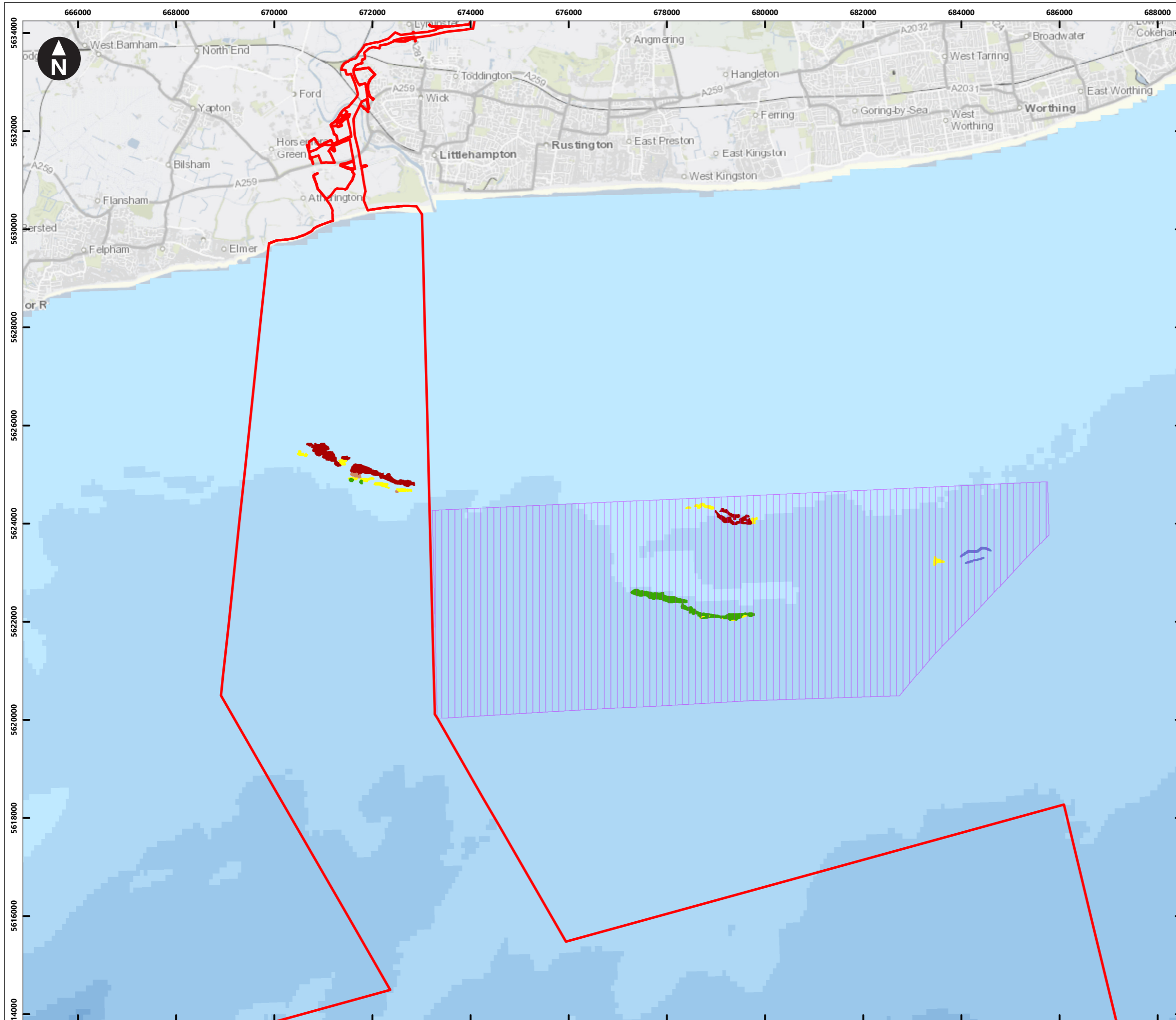
Rampion Extension Development

Rampion 2 Offshore Wind Farm

Figure 8.2.2 Locations and densities of black seabream nests 2009

Environmental Statement

System Identifier: 42285-GOBE-PE-OF-FG-07-5080				Version: 1.1
Company: GOBE	Drawn By: BPHB	Chk/Aprvd: NH	Drawn Date: 04/08/2023	Status: FINAL



Contains OS data © Crown Copyright and database right 2020
 Contains Joint Nature Conservation Committee data © copyright and database right 2020; © Tarmac 2011

Key

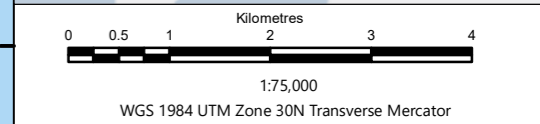
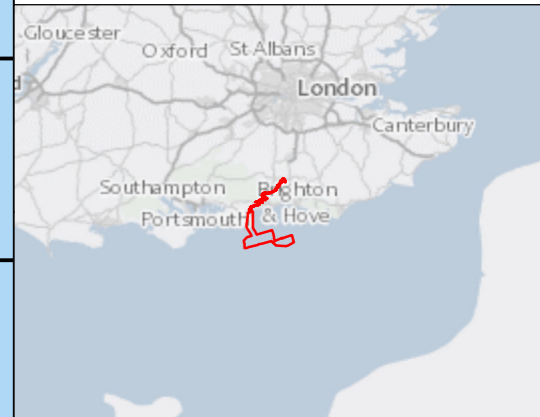
- Proposed DCO Order Limits
- Kingmere Marine Conservation Zone

Black seabream nest density

- Dense Nests
- Faint Dense Nests
- Less Dense/Patchy Nests
- Small Patches of Nests
- Sparse Single Nests

Depth (m)

- 0 - 10
- 10 - 20
- 20 - 30
- 30 - 40
- 40 - 50



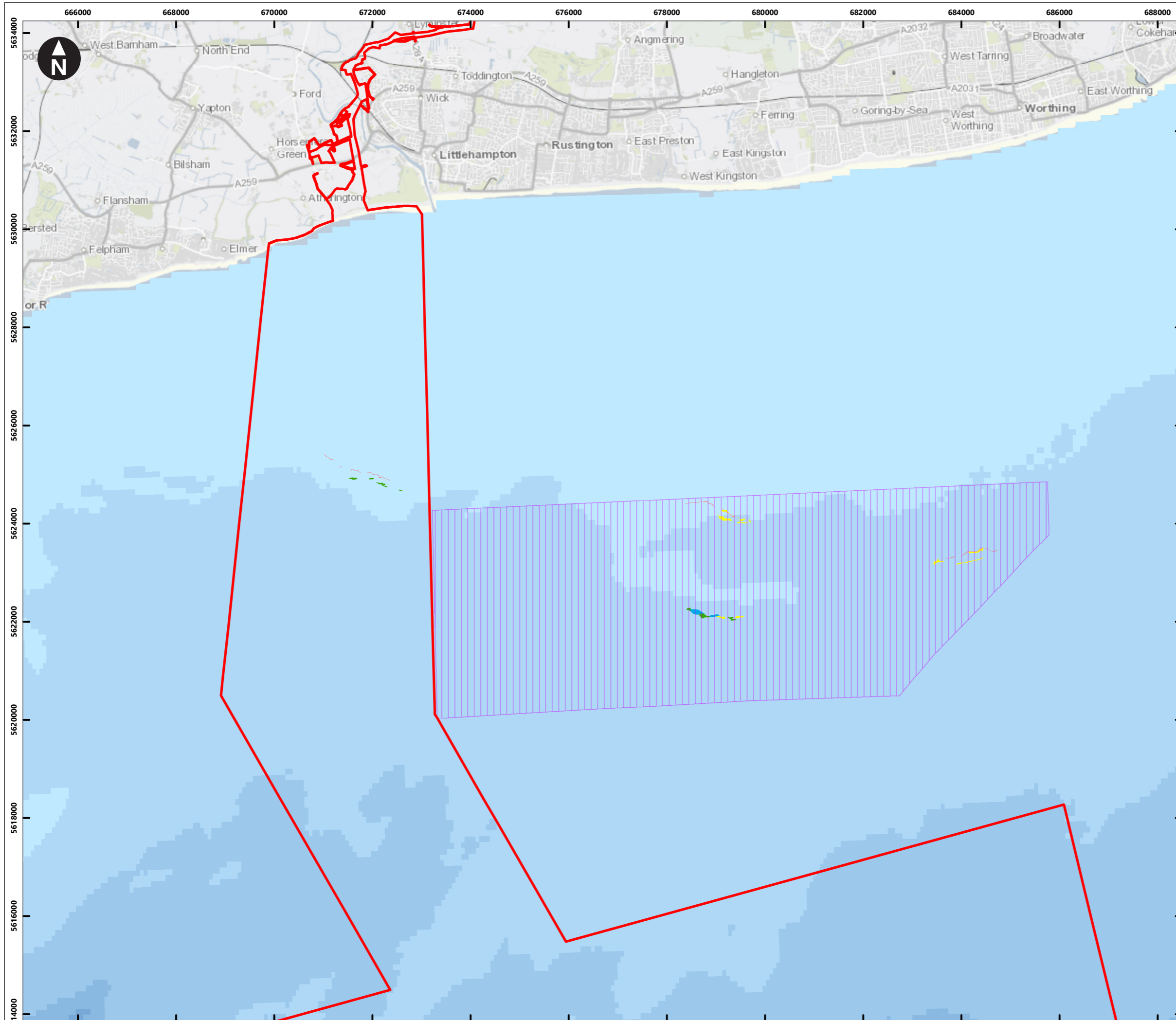
Rampion Extension Development

Rampion 2 Offshore Wind Farm

Figure 8.2.3 Locations and densities of black seabream nests 2011

Environmental Statement

System Identifier: 42285-GOBE-PE-OF-FG-07-6110				Version: 1.1
Company: GOBE	Drawn By: BPHB	Chk/Aprvd: NH	Drawn Date: 04/08/2023	Status: FINAL



Contains OS data © Crown Copyright and database right 2020
 Contains Joint Nature Conservation Committee data © copyright and database right 2020; © Tarmac and Hanson 2013

Key

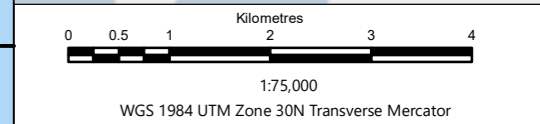
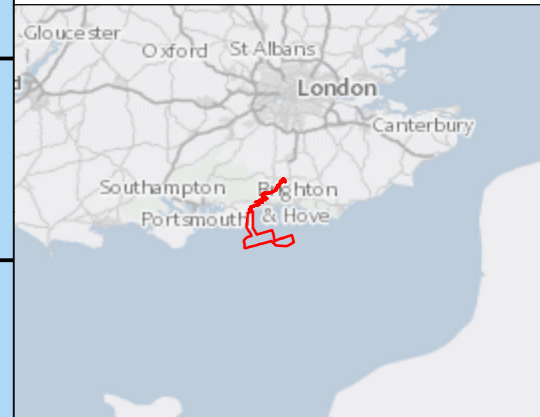
- Proposed DCO Order Limits
- Kingmere Marine Conservation Zone

Black seabream nest density

- Faint dense nests
- Less dense/patchy nests
- Small patches of nests
- Sparse single nests

Depth (m)

- 0 - 10
- 10 - 20
- 20 - 30
- 30 - 40
- 40 - 50



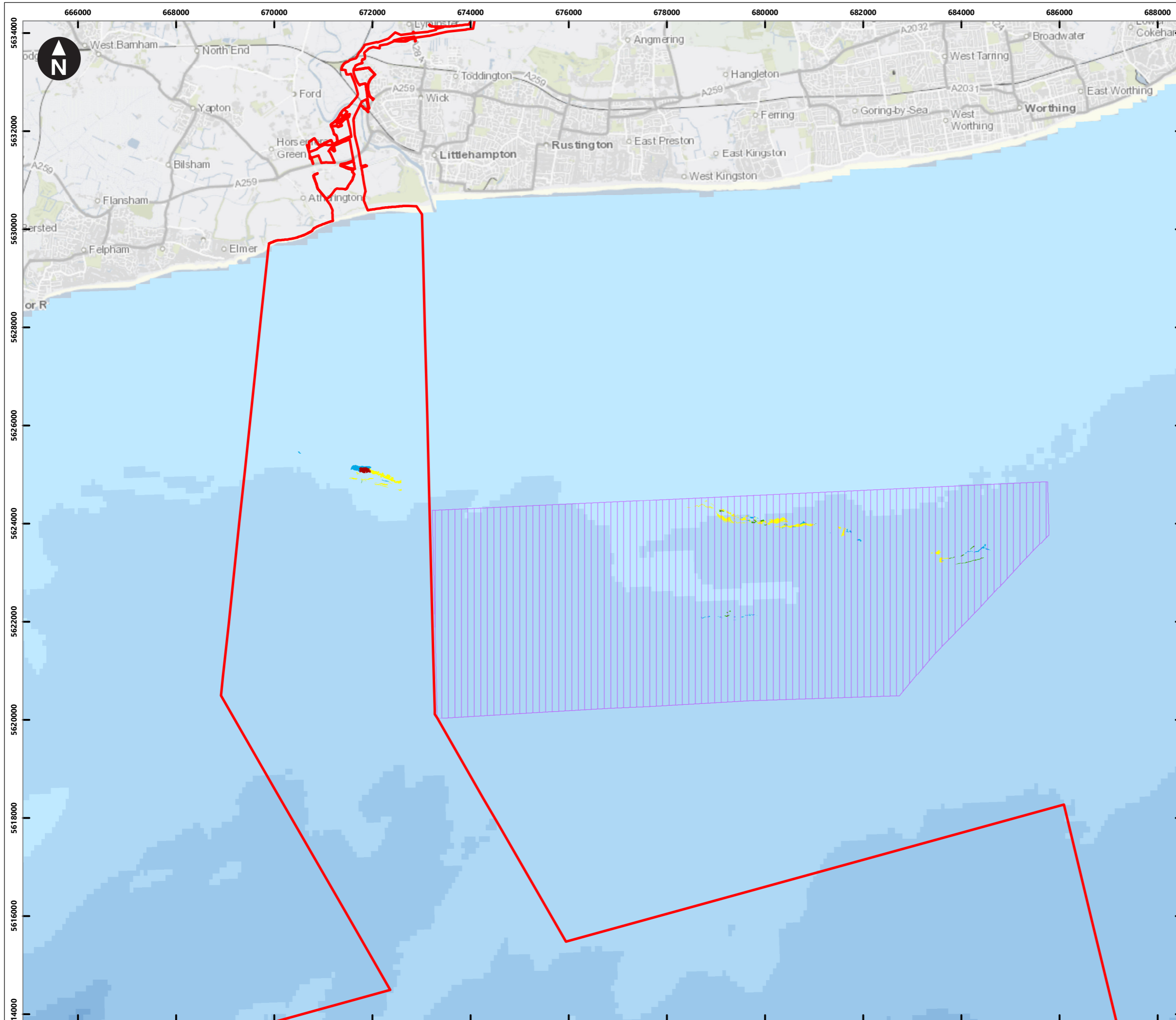
Rampion Extension Development

Rampion 2 Offshore Wind Farm

Figure 8.2.4 Locations and densities of seabream nests 2013

Environmental Statement

System Identifier: 42285-GOBE-PE-OF-FG-07-5191				Version: 1.1
Company: GOBE	Drawn By: BPHB	Chk/Aprvd: NH	Drawn Date: 04/08/2023	Status: FINAL



Key

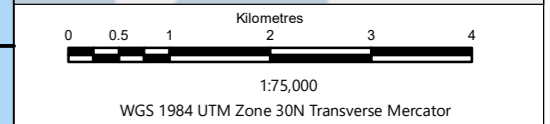
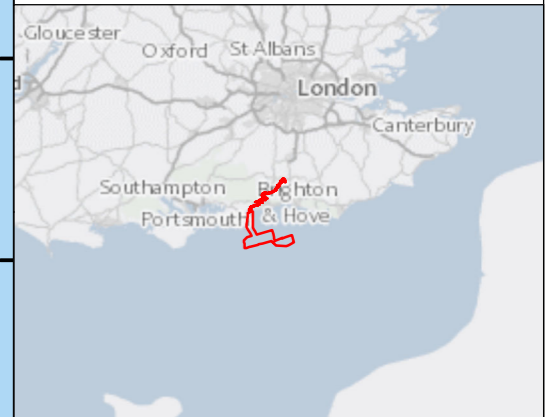
- Proposed DCO Order Limits
- Kingmere Marine Conservation Zone (MCZ)

Black seabream nest density

- Dense nests
- Less dense / patchy nests
- Small patches of nests
- Sparse single nests

Depth (m)

- 0 - 10
- 10 - 20
- 20 - 30
- 30 - 40
- 40 - 50



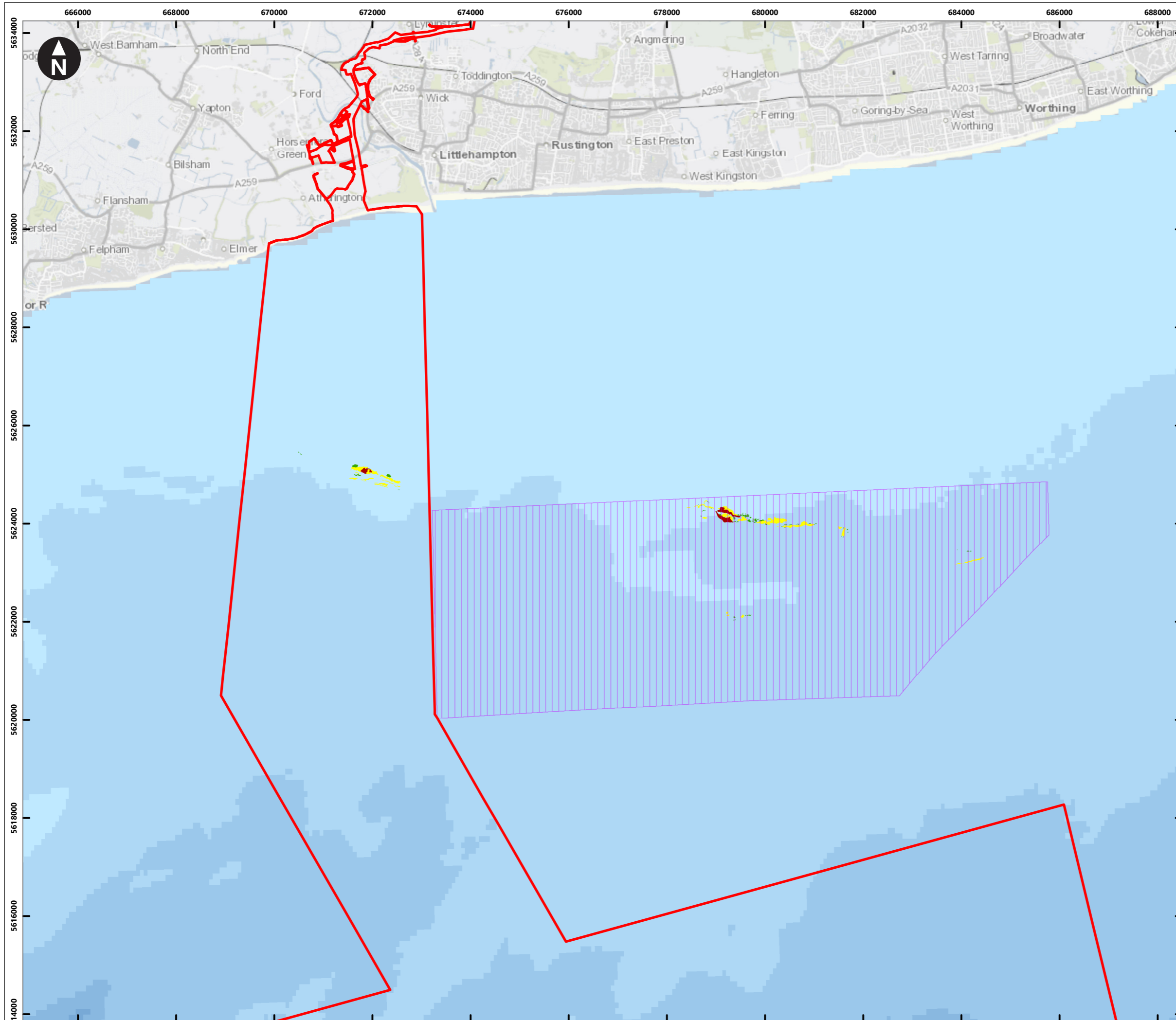
Rampion Extension Development

Rampion 2 Offshore Wind Farm

Figure 8.2.5 Locations and densities of black seabream nests 2017

Environmental Statement

System Identifier: 42285-GOBE-PE-OF-FG-07-1090				Version: 1.1
Company: GOBE	Drawn By: BPHB	Chk/Prvd: NH	Drawn Date: 04/08/2023	Status: FINAL



Key

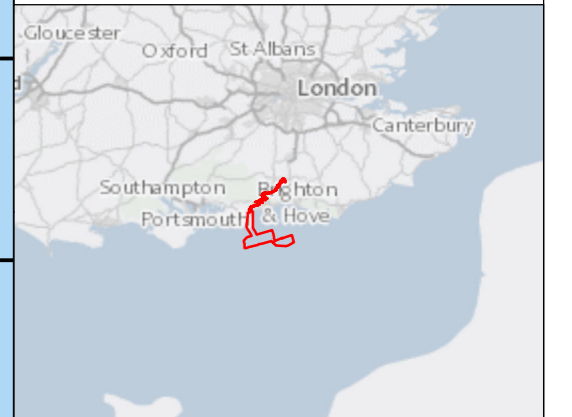
- Proposed DCO Order Limits
- Kingmere Marine Conservation Zone

Black seabream nest density

- Dense nests
- Less dense / patchy nests
- Small patches of nests

Depth (m)

- 0 - 10
- 10 - 20
- 20 - 30
- 30 - 40
- 40 - 50



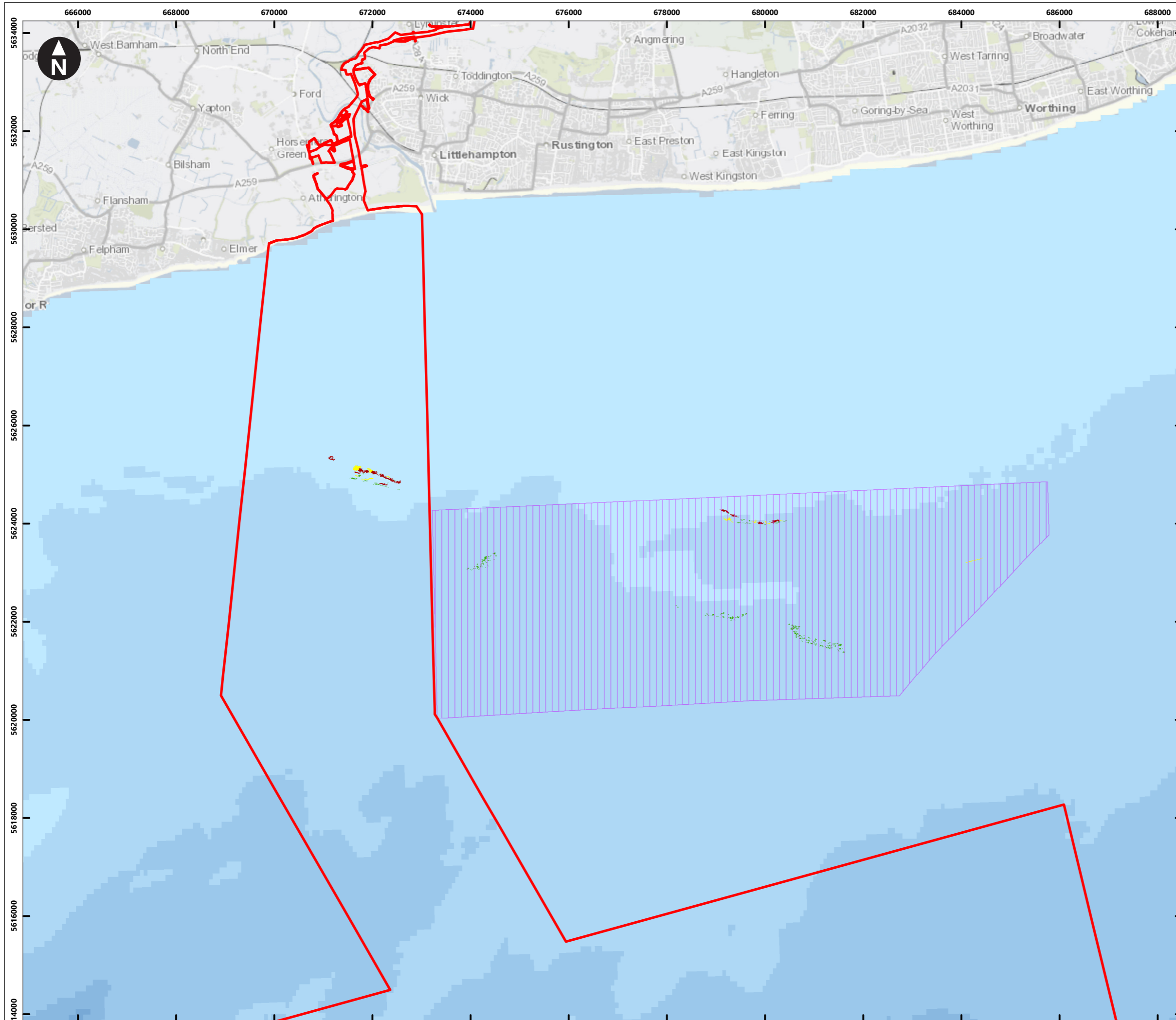
0 0.5 1 2 3 4
 Kilometres
 1:75,000
 WGS 1984 UTM Zone 30N Transverse Mercator

Rampion Extension Development

Rampion 2 Offshore Wind Farm
 Figure 8.2.6 Locations and densities of black seabream nests 2018
 Environmental Statement

System Identifier: 42285-GOBE-PE-OF-FG-O7-3657				Version: 1.1
Company: GOBE	Drawn By: BPHB	Chk/Aprvd: NH	Drawn Date: 04/08/2023	Status: FINAL

Contains OS data © Crown Copyright and database right 2020
 Contains Joint Nature Conservation Committee data © copyright and database right 2020; © Tarmac 2019

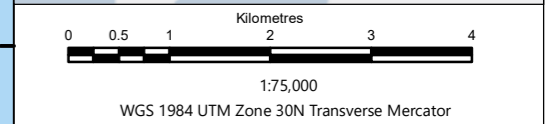
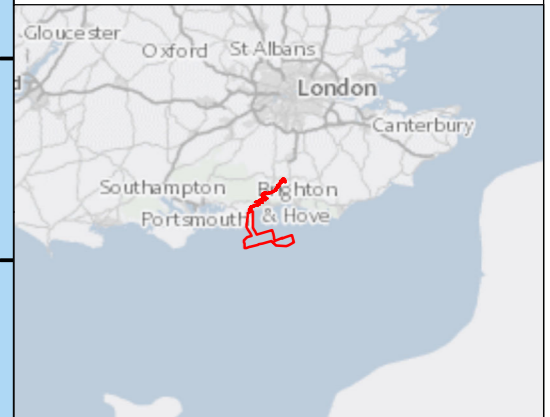


Key
 Proposed DCO Order Limits

Kingmere Marine Conservation Zone (MCZ)

Black seabream nest density
 Dense nests
 Less dense/patchy nests
 Small patches of nests

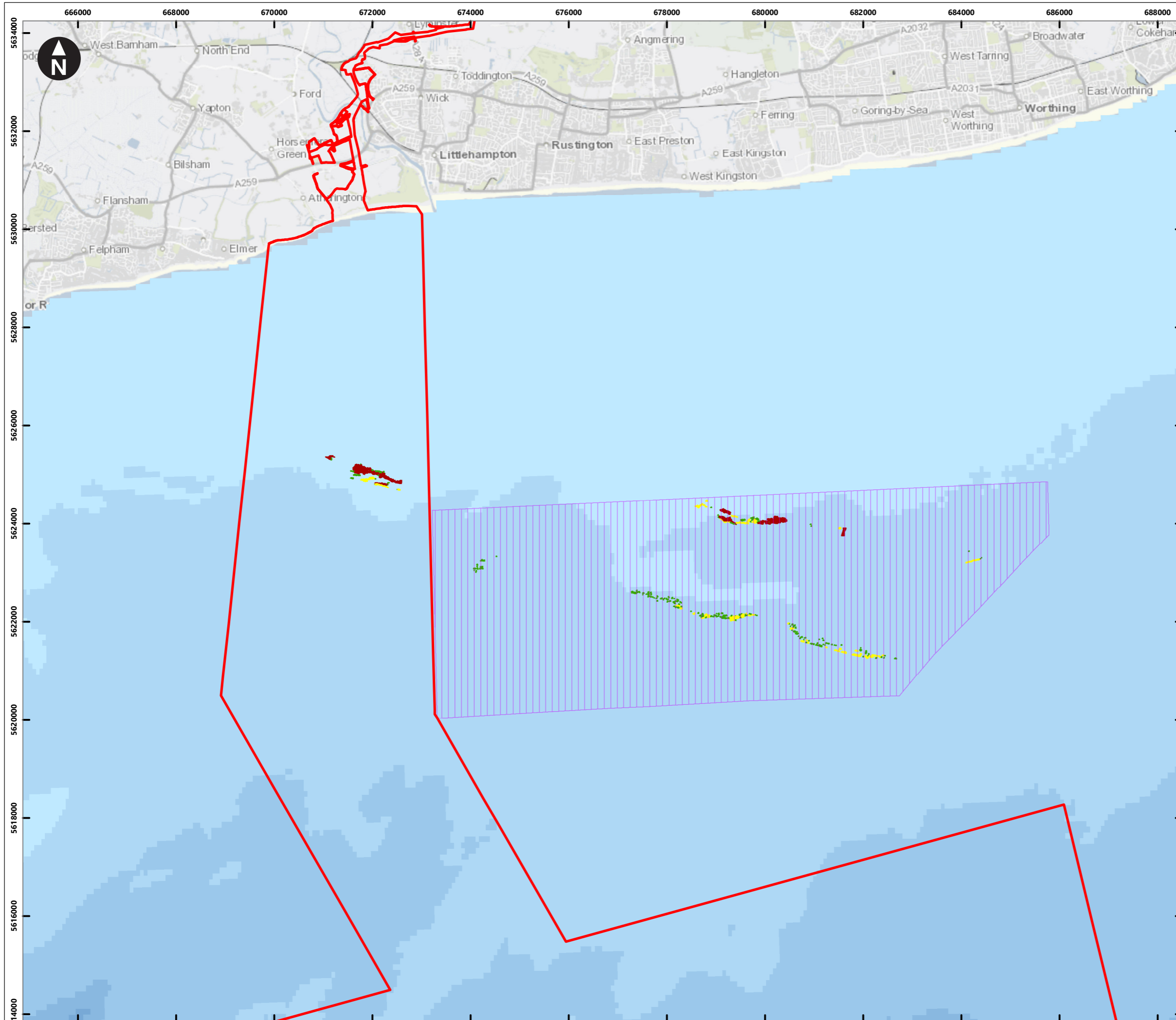
Depth (m)
 0 - 10
 10 - 20
 20 - 30
 30 - 40
 40 - 50



Rampion Extension Development

Rampion 2 Offshore Wind Farm
 Figure 8.2.7 Locations and densities of blackseabream nests 2019
 Environmental Statement

System Identifier: 42285-GOBE-PE-OF-FG-07-7257				Version: 1.1
Company: GOBE	Drawn By: BPHB	Chk/Aprvd: NH	Drawn Date: 04/08/2023	Status: FINAL



Key

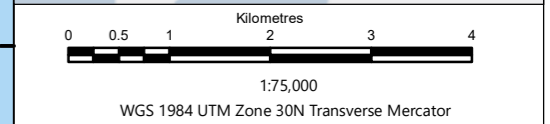
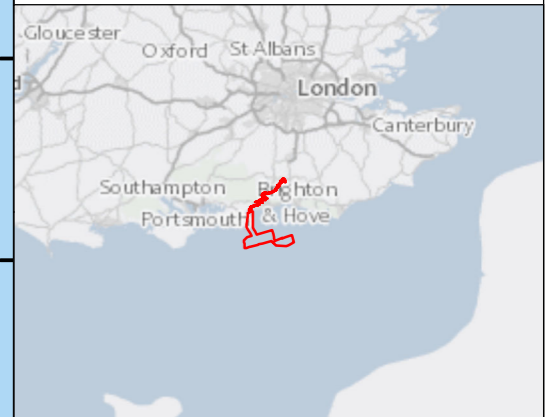
- Proposed DCO Order Limits
- Kingmere Marine Conservation Zone

Black seabream nest density

- Dense nests
- Less dense/patchy nests
- Small patches of nests

Depth (m)

- 0 - 10
- 10 - 20
- 20 - 30
- 30 - 40
- 40 - 50



Rampion Extension Development

Rampion 2 Offshore Wind Farm

Figure 8.2.8 Locations and densities of black seabream nests 2020

Environmental Statement

System Identifier: 42285-GOBE-PE-OF-FG-07-6197				Version: 1.1
Company: GOBE	Drawn By: BPHB	Chk/Aprvd: NH	Drawn Date: 04/08/2023	Status: FINAL

Page intentionally blank

